

# BLOQUE 05

## P15-2A

3D

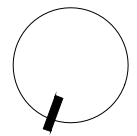
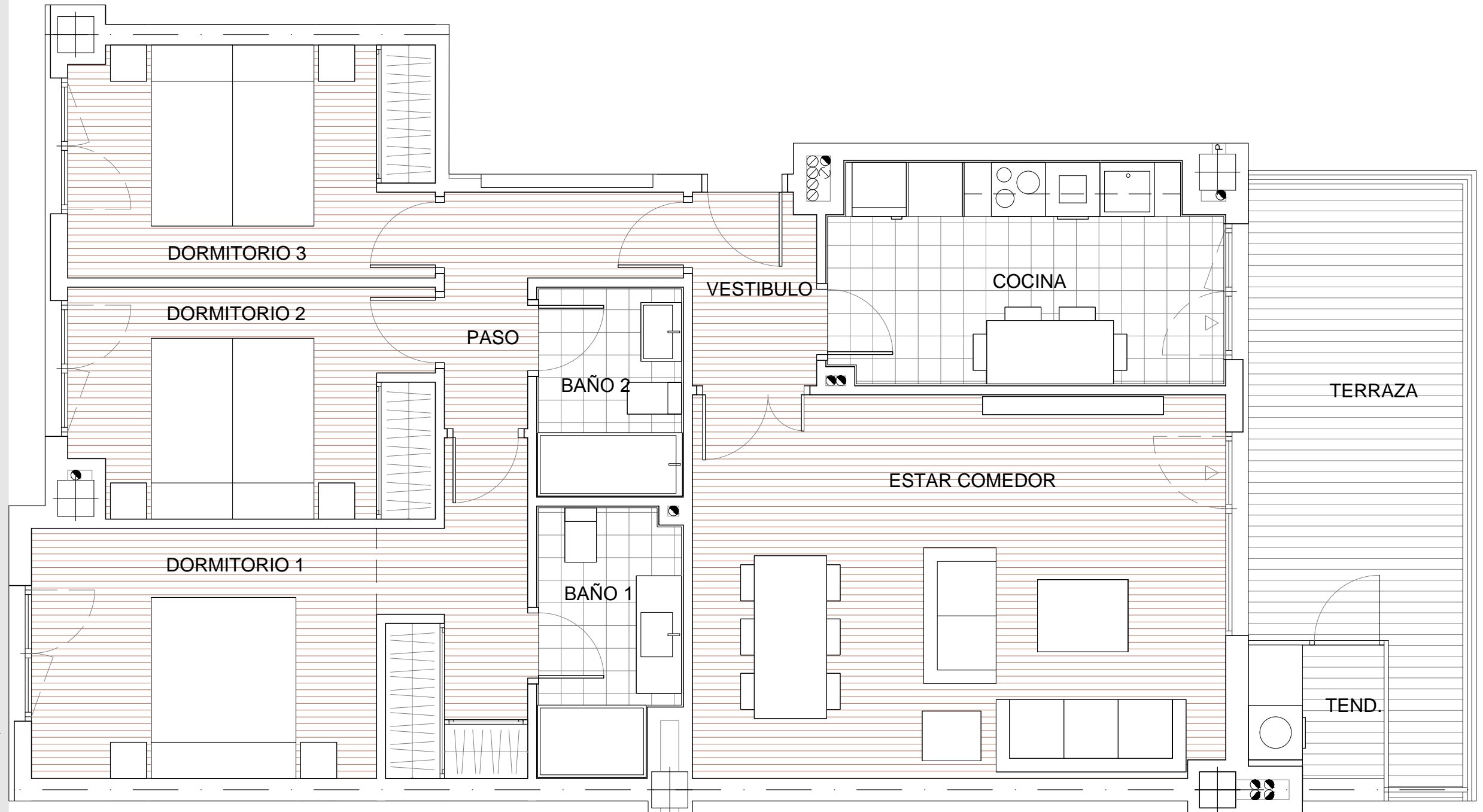
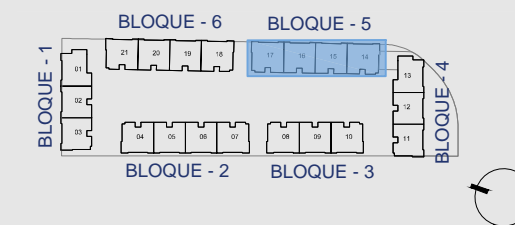
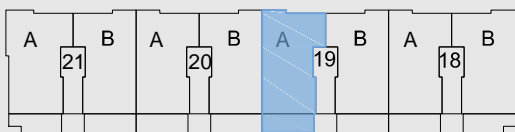
### SUPERFICIE ÚTIL INTERIOR

|               |                      |
|---------------|----------------------|
| Vestíbulo     | 2,98 m <sup>2</sup>  |
| Paso          | 4,20 m <sup>2</sup>  |
| Cocina        | 10,35 m <sup>2</sup> |
| Estar comedor | 24,98 m <sup>2</sup> |
| Dormitorio 1  | 16,00 m <sup>2</sup> |
| Dormitorio 2  | 10,17 m <sup>2</sup> |
| Dormitorio 3  | 10,34 m <sup>2</sup> |
| Baño 1        | 4,33 m <sup>2</sup>  |
| Baño 2        | 3,57 m <sup>2</sup>  |
| Baño 3        |                      |
| Despacho      |                      |
| Escalera      |                      |

### TOTAL SUP. CONSTRUIDA:

|                  |                       |
|------------------|-----------------------|
| VIVIENDA         | 114,70 m <sup>2</sup> |
| TERRAZA-TENEDERO | 17,25 m <sup>2</sup>  |

| P17        |       | P16 |       | P15 |       | P14 |       |
|------------|-------|-----|-------|-----|-------|-----|-------|
|            | ÁTICO |     | ÁTICO |     | ÁTICO |     | ÁTICO |
| 6          |       | 6   |       | 6   |       | 6   |       |
| 5          |       | 5   |       | 5   |       | 5   |       |
| 4          |       | 4   |       | 4   |       | 4   |       |
| 3          |       | 3   |       | 3   |       | 3   |       |
| 2          |       | 2   |       | 2   |       | 2   |       |
| 1          |       | 1   |       | 1   |       | 1   |       |
| BAJA       |       |     |       |     |       |     |       |
| SEMISOTANO |       |     |       |     |       |     |       |



Escala Gráfica

\* Hasta la redacción del proyecto técnico correspondiente plano orientativo no vinculante ni contractual, pudiendo ser modificado por requerimientos técnicos o administrativos.